



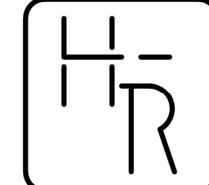
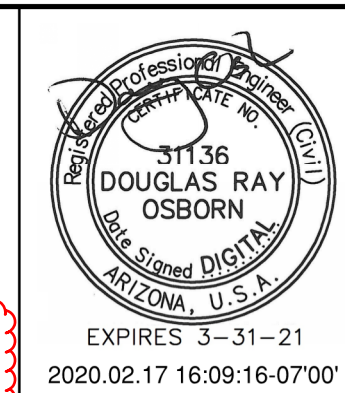
Caliente Construction Inc.

Project: SUSD - Navajo Elementary
Owner: Scottsdale Unified School District
Architect: Hess Rountree
Date: 5/1/2020

			Adjacent Ways	
			Quantity	Sq.Ft.
Description	Unit Price	Unit	Quantity	Amount
GENERAL REQUIREMENTS - TESTING				\$1,088
Special Inspection and Testing	\$0.00	LS	0	\$1,088
TOTALS			Sq.Ft.	0
LAYOUT & SURVEYING				\$1,632
Site Survey	\$0.00	EA	0	\$1,632
TOTALS			Sq.Ft.	0
SELECTIVE DEMOLITION				\$35,844
Name				
Remove Concrete/asphalt flatwork	\$2.25	SF	11,830	\$26,618
Remove grass/play area	\$1.65	SF	5,591	\$9,226
Asphalt Removal	\$1.70	EA		\$0
TOTAL			Sq.Ft.	0
CONCRETE				\$40,108
Vertical Concrete Curb & Gutter	\$17.50	LF	393	\$6,877
Vertical Curb - Onsite	\$13.97	LF	269	\$3,756
Sidewalks -4 "	\$4.14	SF	294	\$1,219
Concrete Fire Lane 6"	\$5.15	SF	2,890	\$14,884
Concrete Drive - 8" Broom Finish	\$6.80	SF	1,967	\$13,372
TOTALS			Sq.Ft.	0.00
EARTHWORK & PAVING				\$31,150
3" Asphalt Paving - Fire Lane	\$34.25	SY	910	\$31,150
TOTALS			Sq.Ft.	0.00
TOTALS			Sq.Ft.	0.00
TOTAL CONSTRUCTION COSTS				\$109,822

GENERAL CONDITIONS			\$	8,594
LIABILITY INSURANCE / BLDRS RISK INS	1.18%		\$	1,295.90
BONDING FEES	1.00%		\$	1,098.22
CONSTRUCTION CONTINGENCY	6.00%			
OWNER CONTINGENCY	0.00%		\$	-
SUBTOTAL			\$	120,810
TAX (SCOTTSDALE)	5.23%		\$	6,667.07
		CURRENT BUDGET	\$	127,477.52
		Cost / SF		

Navajo Site Project \$ 1,017,356.00
 SUSD Allowance \$ 30,000.00
 Adjacent Ways Change \$ (127,477.52)
 Revised Contract Amount \$ 889,878.48



HESS - ROUNTREE, INC.
CONSULTING ENGINEERS & LAND SURVEYORS
9831 SOUTH 51ST STREET, SUITE C110
PHOENIX, ARIZONA 85044 (480)496-0244

DES. **MAM** DRN. **ANM** CKD **DRO** JOB NO. **1904-10**

SPECIFIC DEMOLITION NOTES:

1. WITHIN DEMOLITION AREA, REMOVE AND LEGALLY DISPOSE OF ALL BUILDINGS, CONCRETE, ASPHALT, ABC, WALLS, CURBS, TREES AND ANY IMPROVEMENTS EXCEPT ITEMS NOTED TO REMAIN AND BE PROTECTED OR REMOVED AND SALVAGED. EXISTING UTILITIES TO REMAIN AND BE PROTECTED UNLESS OTHERWISE NOTED.
2. EXISTING FENCE TO REMAIN AND BE PROTECTED.
3. REMOVE EXISTING FENCE/GATE.
4. EXISTING FIRE HYDRANT TO REMAIN AND BE PROTECTED.
5. EXISTING WALL TO REMAIN AND BE PROTECTED.
6. REMOVE AND SALVAGE EXISTING SIGN FOR REINSTALLATION. SEE GRADING AND DRAINAGE PLANS FOR REINSTALLATION DETAILS.
7. REMOVE AND SALVAGE EXISTING TRASH CAN.
8. EXISTING SIGN AND POST TO REMAIN AND BE PROTECTED.
9. EXISTING LIGHT POLE AND BASE TO BE REMOVED.
10. REMOVE EXISTING TREE.
11. EXISTING TREE TO REMAIN AND BE PROTECTED.
12. PROTECT EXISTING CONCRETE COURT. STRIPING TO BE OBLITERATED. REMOVE EXISTING BASKETBALL POST AND BACKBOARD. CUT POST FLUSH WITH CONCRETE. GRIND POST SMOOTH AND FILL WITH NON-SHRINK GROUT. SEE SHEET C-3 FOR PLAYCOURT DETAILS.
13. EXISTING BACKFLOW PREVENTER TO REMAIN AND BE PROTECTED.
14. REMOVE AND SALVAGE 12" OF SAND. RETURN TO OWNER AT TAVAN SCHOOL.
15. REMOVE EXISTING WALL.
16. EXISTING CONCRETE CURB AND/OR GUTTER TO REMAIN AND BE PROTECTED.
17. EXISTING CONCRETE RAMP TO REMAIN AND BE PROTECTED.
18. EXISTING GAS LINE TO REMAIN AND BE PROTECTED.
19. REMOVE AND SALVAGE EXISTING CANOPY STRUCTURE (SEE LANDSCAPE DRAWINGS).
20. EXISTING BACKFLOW PREVENTER TO BE REMOVED.
21. EXISTING CONCRETE SIDEWALK AND/OR CURB TO REMAIN AND BE PROTECTED.
22. SEE LANDSCAPE PLAN FOR SALVAGE AND DEMOLITION OF EXISTING PLAY EQUIPMENT AND SHADE STRUCTURES.
23. REMOVE EXISTING BASKETBALL GOAL POST AND FOOTING.

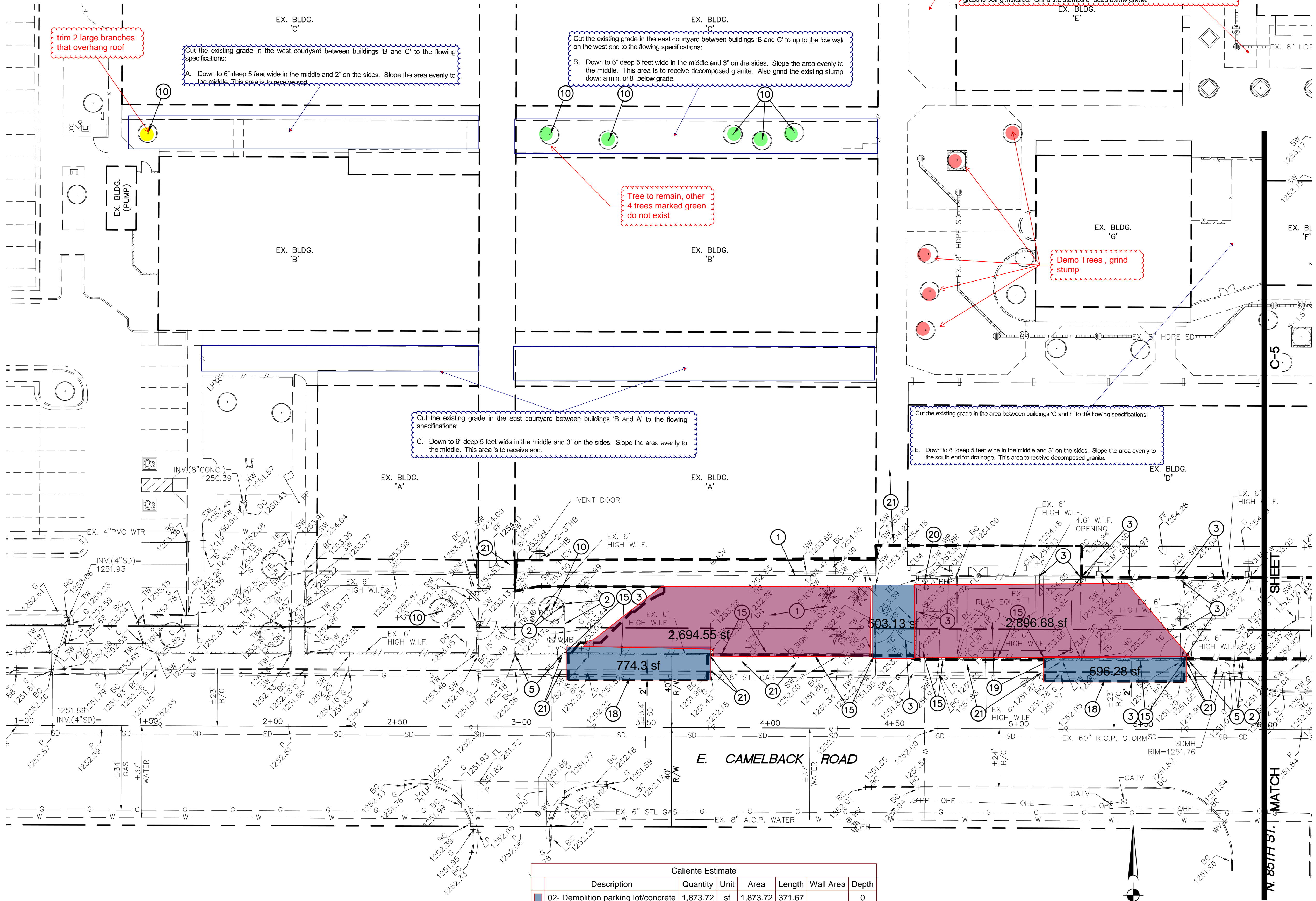
GENERAL DEMOLITION NOTES:

1. EXISTING STRUCTURES, MATERIALS, LANDSCAPING, ETC., THAT ARE TO REMAIN, WHICH ARE DAMAGED IN THE PERFORMANCE OF THE WORK, ARE THE CONTRACTOR'S RESPONSIBILITY TO REPAIR OR REPLACE IN KIND. THE ARCHITECT SHALL BE THE SOLE JUDGE OF ACCEPTABILITY OF REPAIR OR REPLACEMENT.
2. ALL NON-SALVAGE ITEMS SHALL BE REMOVED FROM THE SITE AND DISPOSED OF LEGALLY.
3. SECURITY AND SAFETY ARE THE CONTRACTOR'S SOLE RESPONSIBILITY.
4. ALL UTILITIES ARE TO REMAIN IN PLACE (WATER, SEWER, TELEPHONE, STORM DRAIN, FLOOD IRRIGATION, GAS, ETC.) UNLESS NOTED OTHERWISE. PROTECT FROM DAMAGE.
5. SAWCUT SIDEWALKS AND CONCRETE AT NEAREST JOINT OR AS DIRECTED BY THE CITY INSPECTOR.
6. SAWCUT ASPHALTIC CONCRETE AT LIMITS OF DEMOLITION AS SHOWN ON PLANS OR AS DIRECTED BY THE CITY INSPECTOR.
7. SALVAGE ITEMS NOT BEING REINSTALLED SHALL BE DELIVERED TO THE DISTRICT MAINTENANCE YARD.
8. SALVAGE ALL TRASH CANS AND DELIVER TO OWNER.

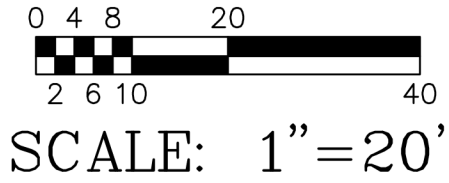
TOPOGRAPHIC SURVEY AND DEMOLITION PLAN

SCOTTSDALE UNIFIED SCHOOL DISTRICT
BUS DROP AND PARKING LOT PLANS FOR
NAVAJO ELEMENTARY SCHOOL

DRAWING STATUS	SHEET	OF	
2ND CITY SUBMITTAL SET			
DATE: 02-14-20	4	9	C-4



Caliente Estimate						
Description	Quantity	Unit	Area	Length	Wall Area	Depth
02 - Demolition parking lot/concrete	1,873.72	sf	1,873.72	371.67		0
02 - Demolition Grass / play area	5,591.23	sf	5,591.23	535.61		0



COS #5566-19

GENERAL DEMOLITION NOTES:

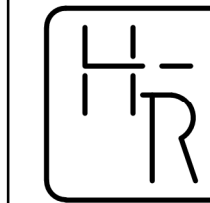
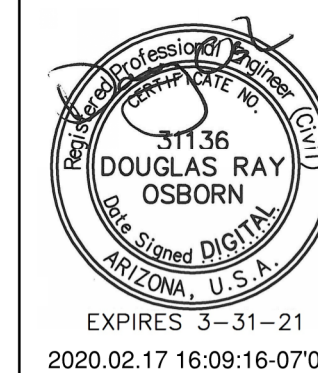
- EXISTING STRUCTURES, MATERIALS, LANDSCAPING, ETC., THAT ARE TO REMAIN, WHICH ARE DAMAGED IN THE PERFORMANCE OF THE WORK, ARE THE CONTRACTOR'S RESPONSIBILITY TO REPAIR OR REPLACE IN KIND. THE ARCHITECT SHALL BE THE SOLE JUDGE OF ACCEPTABILITY OF REPAIR OR REPLACEMENT.
- ALL NON-SALVAGE ITEMS SHALL BE REMOVED FROM THE SITE AND DISPOSED OF LEGALLY.
- SECURITY AND SAFETY ARE THE CONTRACTOR'S SOLE RESPONSIBILITY.
- ALL UTILITIES ARE TO REMAIN IN PLACE (WATER, SEWER, TELEPHONE, STORM DRAIN, FLOOD IRRIGATION, GAS, ETC.) UNLESS NOTED OTHERWISE. PROTECT FROM DAMAGE.
- SAWCUT SIDEWALKS AND CONCRETE AT NEAREST JOINT OR AS DIRECTED BY THE CITY INSPECTOR.
- SAWCUT ASPHALTIC CONCRETE AT LIMITS OF DEMOLITION AS SHOWN ON PLANS OR AS DIRECTED BY THE CITY INSPECTOR.
- SALVAGE ITEMS NOT BEING REINSTALLED SHALL BE DELIVERED TO THE DISTRICT MAINTENANCE YARD.
- SALVAGE ALL TRASH CANS AND DELIVER TO OWNER.

SPECIFIC DEMOLITION NOTES:

- WITHIN DEMOLITION AREA, REMOVE AND LEGALLY DISPOSE OF ALL BUILDINGS, CONCRETE, ASPHALT, ABC, WALLS, CURBS, TREES AND ANY IMPROVEMENTS EXCEPT ITEMS NOTED TO REMAIN AND BE PROTECTED OR REMOVED AND SALVAGED. EXISTING UTILITIES TO REMAIN AND BE PROTECTED UNLESS OTHERWISE NOTED.
- EXISTING FENCE TO REMAIN AND BE PROTECTED.
- REMOVE EXISTING FENCE/GATE.
- EXISTING FIRE HYDRANT TO REMAIN AND BE PROTECTED.
- EXISTING WALL TO REMAIN AND BE PROTECTED.
- REMOVE AND SALVAGE EXISTING SIGN FOR REINSTALLATION. SEE GRADING AND DRAINAGE PLANS FOR REINSTALLATION DETAILS.
- REMOVE AND SALVAGE EXISTING TRASH CAN.
- EXISTING SIGN AND POST TO REMAIN AND BE PROTECTED.
- EXISTING LIGHT POLE AND BASE TO BE REMOVED.
- REMOVE EXISTING TREE.
- EXISTING TREE TO REMAIN AND BE PROTECTED.

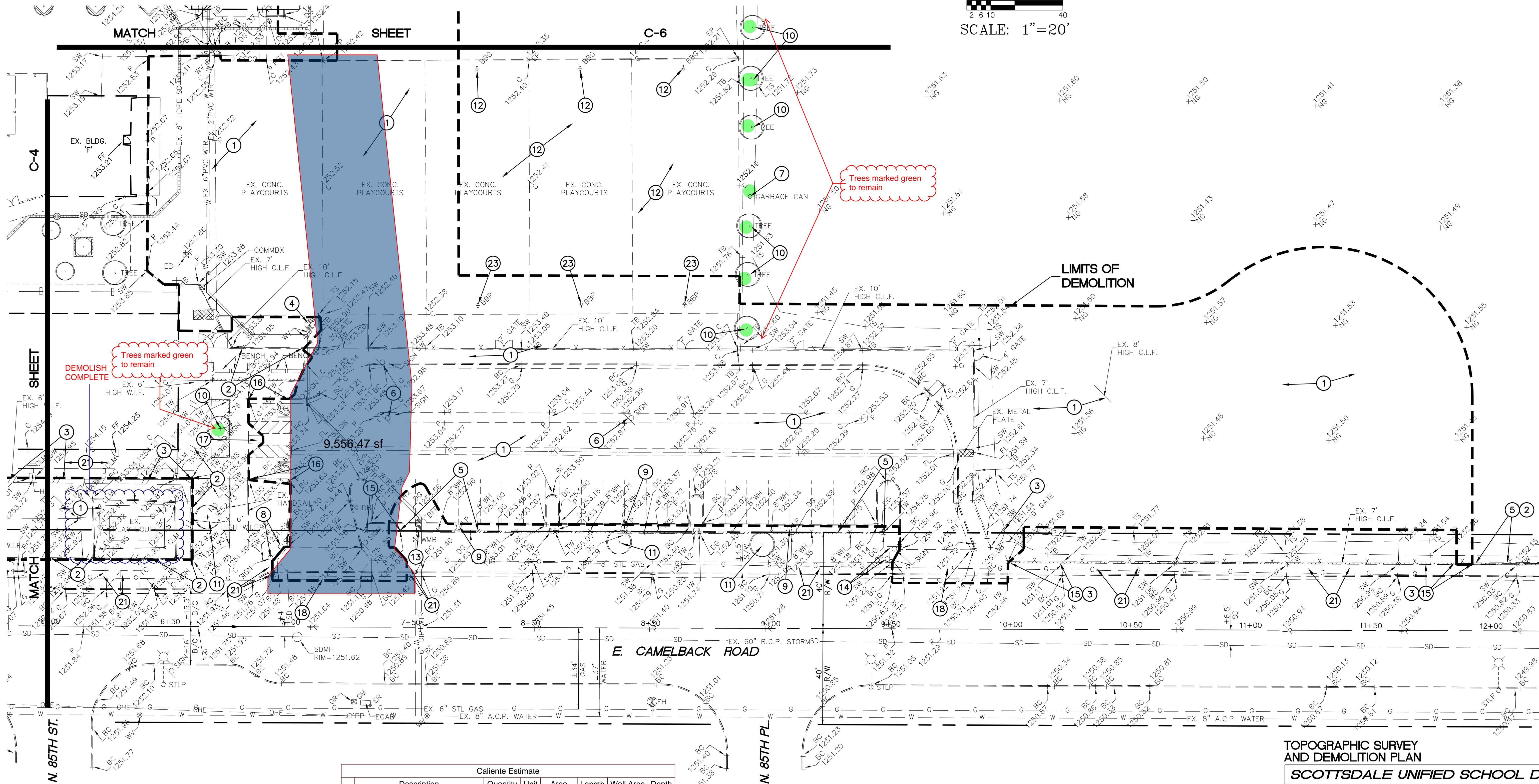
- PROTECT EXISTING CONCRETE COURT. STRIPING TO BE OBLITERATED. REMOVE EXISTING BASKETBALL POST AND BACKBOARD. CUT POST FLUSH WITH CONCRETE. GRIND POST SMOOTH AND FILL WITH NON-SHRINK GROUT. SEE SHEET C-3 FOR PLAYCOURT DETAILS.
- EXISTING BACKFLOW PREVENTER TO REMAIN AND BE PROTECTED.
- REMOVE AND SALVAGE 12" OF SAND. RETURN TO OWNER AT TAVAN SCHOOL.
- REMOVE EXISTING WALL.
- EXISTING CONCRETE CURB AND/OR GUTTER TO REMAIN AND BE PROTECTED.
- EXISTING CONCRETE RAMP TO REMAIN AND BE PROTECTED.
- EXISTING GAS LINE TO REMAIN AND BE PROTECTED.
- REMOVE AND SALVAGE EXISTING CANOPY STRUCTURE (SEE LANDSCAPE DRAWINGS).
- EXISTING BACKFLOW PREVENTER TO BE REMOVED.
- EXISTING CONCRETE SIDEWALK AND/OR CURB TO REMAIN AND BE PROTECTED.
- SEE LANDSCAPE PLAN FOR SALVAGE AND DEMOLITION OF EXISTING PLAY EQUIPMENT AND SHADE STRUCTURES.

- REMOVE EXISTING BASKETBALL GOAL POST AND FOOTING.



HESS - ROUNTREE, INC.
CONSULTING ENGINEERS & LAND SURVEYORS
9831 SOUTH 51ST STREET, SUITE C110
PHOENIX, ARIZONA 85044 (480)496-0244

DES. **MAM** DRN. **ANM** CKD **DRO** JOB NO. **1904-10**



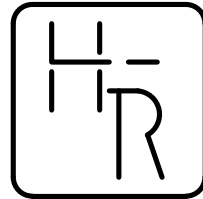
Caliente Estimate						
Description	Quantity	Unit	Area	Length	Wall Area	Depth
02- Demolition parking lot/concrete	9,556.50	sf	9,556.50	558.64		0

TOPOGRAPHIC SURVEY
AND DEMOLITION PLAN
SCOTTSDALE UNIFIED SCHOOL DISTRICT
BUS DROP AND PARKING LOT PLANS FOR
NAVAJO ELEMENTARY SCHOOL

DRAWING STATUS	SHEET	OF	
2ND CITY SUBMITTAL SET	5	9	C-5
DATE:	02-14-20		



COS #5566-19



HESS — ROUNTREE, INC.
CONSULTING ENGINEERS & LAND SURVEYORS
9831 SOUTH 51ST STREET, SUITE C110
PHOENIX, ARIZONA 85044 (480)496-0244

DES. **MAM** DRN. **ANM** CKD **DRO** JOB NO. **1904-10**

**GRADING AND DRAINAGE
CONSTRUCTION NOTES:**

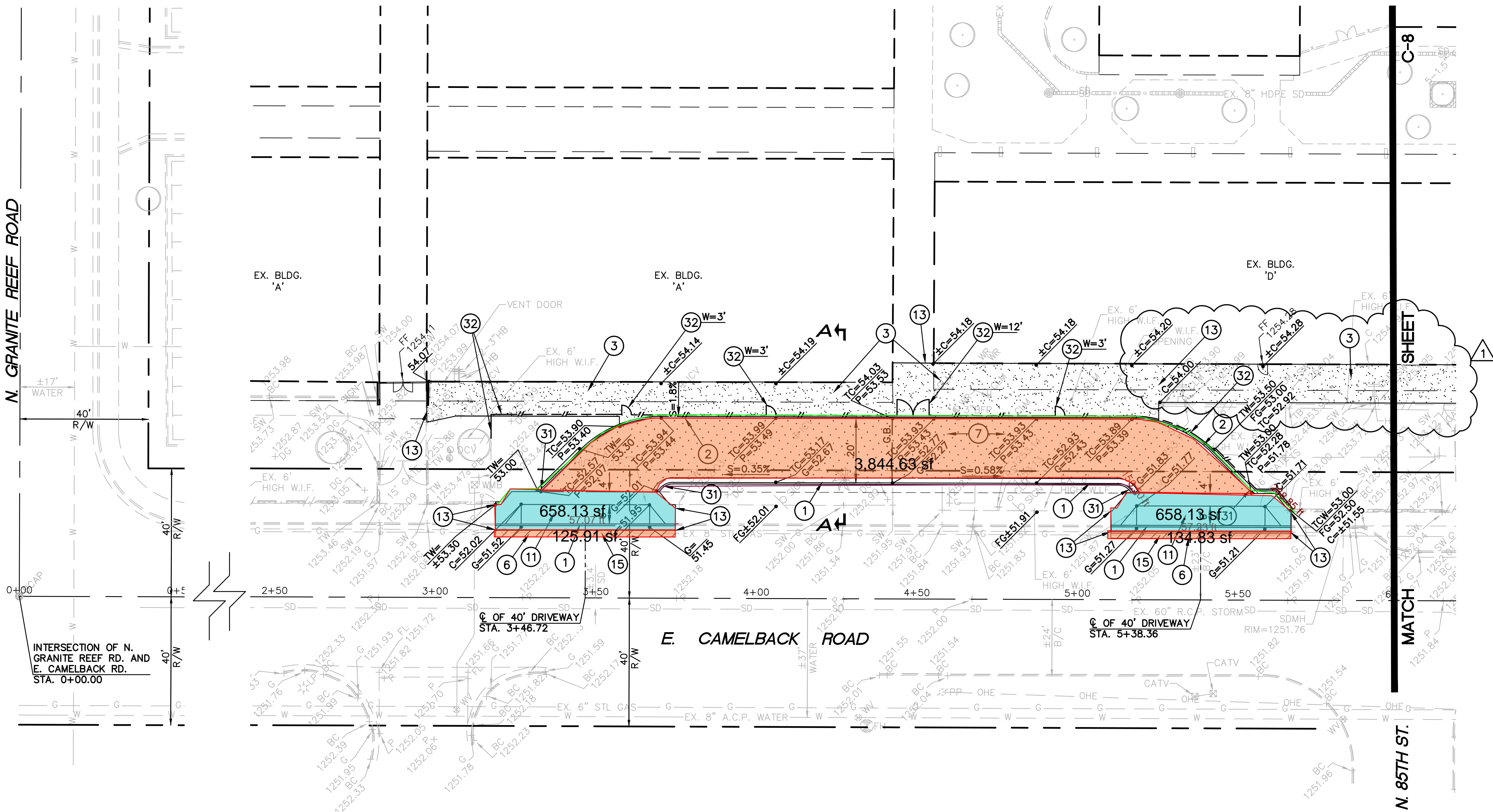
1. INSTALL CONCRETE VERTICAL CURB AND GUTTER (MAG STANDARD DETAIL NO. 220-1, TYPE A).
2. INSTALL CONCRETE SINGLE CURB (MAG STANDARD DETAIL NO. 222, TYPE 'A').
3. INSTALL CONCRETE SIDEWALK (MAG STANDARD DETAIL NO. 230).
4. INSTALL CHAIN LINK FENCE AND GATE (MAG STANDARD DETAIL NO. 160, FENCE HEIGHT AND GATE WIDTH TO BE MODIFIED PER PLANS).
5. INSTALL SIDEWALK RAMP (SEE DETAIL ON SHEET C-2).
6. SAWCUT, REMOVE AND REPLACE 2' MINIMUM OF EXISTING A.C. PAVEMENT IN KIND.
7. INSTALL A.C. PAVEMENT (3" A.C. (3/4 INCH) OVER 6" A.B.C. OVER 10" COMPACTED SUBGRADE).
8. INSTALL DRAIN THROUGH LANDSCAPED AREA (SEE DETAIL ON SHEET C-2).
9. PAINT STRIPE PARKING LOTS TO THE ALIGNMENTS INDICATED, INCLUDING ALL DIRECTIONAL ARROWS, HANDICAP SYMBOLS, CROSSWALKS, ETC.).
10. INSTALL 6" THICK 4000 P.S.I CONCRETE OVER 4" A.B.C., OVER 10" COMPACTED SUBGRADE.
11. INSTALL CONCRETE DRIVEWAY ENTRANCE (CITY OF SCOTTSDALE STANDARD DETAIL NO. 2250).
12. CONSTRUCT WIDE CONCRETE SCUPPER (MAG STANDARD DETAIL NO. 206-1, -2, AND -3, WITH SPLASHPAD, SCUPPER WIDTH TO BE 7').
13. MATCH EXISTING CONCRETE SIDEWALK AND/OR CONCRETE CURB LOCATION AND ELEVATION.
14. INSTALL DRIVEWAY ENTRANCE (MAG STANDARD DETAIL NO. 250-2, MODIFIED PER PLAN).
15. FIELD VERIFY LOCATION AND ELEVATION OF EXISTING GAS OR WATER LINES PRIOR TO THE START OF CONSTRUCTION. PROTECT FROM DAMAGE.
16. NEW BASKETBALL POSTS AND STRIPING (SEE SHEET C-3 FOR DETAILS).
17. INSTALL CONCRETE SIDEWALK TURNDOWN (SEE DETAIL ON SHEET C-2).
18. INSTALL PLAY AREA WALL (SEE LANDSCAPE PLANS).
19. GRADE FROM 1" BELOW TOP OF SIDEWALK TO MATCH EXISTING GRADE AT A 6:1 MAX. SLOPE.
20. ADJUST DRYWELL RIM TO GRADE INDICATED (MAG STANDARD DETAIL NO. 422).
21. REMOVE, SALVAGE AND REINSTALL EXISTING SIGN WITH NEW POST AND BASE PER MAG STANDARD DETAIL NO. 131, TYPE 'C'.
22. INSTALL SITE WALL (SEE STRUCTURAL PLANS).
23. INSTALL NEW FOUR SQUARE (SEE SHEET C-2).
24. CONNECT TO EXISTING BUILDING DOWNSPOUT WITH A NEW SQUARE TO ROUND ADAPTER.
25. INSTALL NEW 8" H.D.P.E. STORM DRAIN PIPE WITH SMOOTH INTERIOR AND 10.8 P.S.I. JOINTS.
26. INSTALL AREA DRAIN (SEE DETAIL ON SHEET C-2).
27. INSTALL DUAL CHAMBER DRYWELL (SEE DETAIL ON SHEET C-2).
28. INSTALL PASTURE VALVE (SEE DETAIL ON SHEET C-2).
29. ADJUST EXISTING WATER VALVE TO FINISH GRADE (MAG STANDARD DETAIL NO. 270).
30. INSTALL DEADBOLT LOCK TO CHAIN LINK FENCE (SEE LANDSCAPE DRAWINGS).
31. CURB TERMINATION (MAG STANDARD DETAIL NO. 222). MODIFIED FOR VERTICAL CURB AND GUTTER WHERE SHOWN.
32. INSTALL WROUGHT IRON FENCE/GATE (SEE DETAIL ON SHEET C-2).
33. CONSTRUCT CURB WALL (SEE DETAIL ON SHEET C-2).
34. INSTALL HANDRAIL (SEE DETAIL ON SHEET C-2).
35. REMOVE AND RELOCATE BACKSTOP.
36. NEW 1.5" WATER METER TO BE INSTALLED BY CITY AFTER ALL APPROPRIATE FEES HAVE BEEN PAID.
37. INSTALL 1.5" REDUCED PRESSURE PRINCIPLE BACKFLOW PREVENTION ASSEMBLY. INSTALL GUARDSHACK HS-2 ENCLOSURE OR APPROVED EQUAL ON 4" CONCRETE SLAB.

GRADING AND DRAINAGE PLANS

SCOTTSDALE UNIFIED SCHOOL DISTRICT

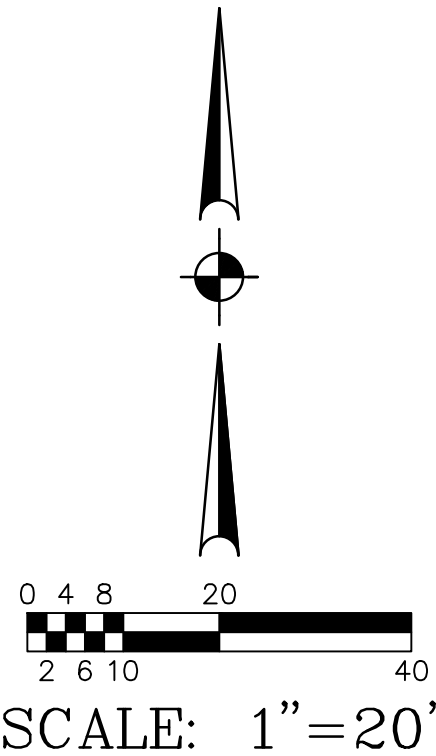
**BUS DROP AND PARKING LOT PLANS FOR
NAVAJO ELEMENTARY SCHOOL**

DRAWING STATUS	SHEET	OF	
ADDENDUM 1			
	7	9	C-7
DATE:	02-24-20		



Caliente Estimate						
Description	Quantity	Unit	Area	Length	Wall Area	Depth
03 - 9" driveway concrete	1,316.26	sf	1,316.26	263.31		0
03 - Curb and Gutter	264.80	ft		264.80		0
03 - Vertical Curb	268.85	ft		268.85		0
32 - Asphalt bus lane 3"	4,105.35	sf	4,105.35	698.77		0

ADDENDUM 1: 2/24/20



COS #5566-19

GRADING AND DRAINAGE
CONSTRUCTION NOTES:

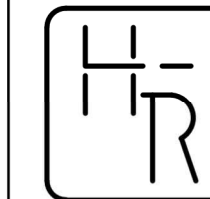
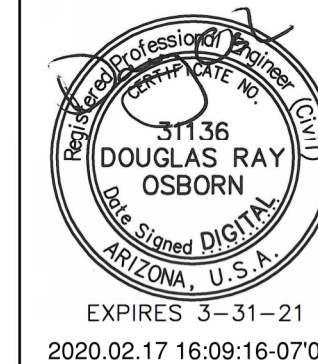
1. INSTALL CONCRETE VERTICAL CURB AND GUTTER (MAG STANDARD DETAIL NO. 220-1, TYPE A).
2. INSTALL CONCRETE SINGLE CURB (MAG STANDARD DETAIL NO. 222, TYPE 'A').
3. INSTALL CONCRETE SIDEWALK (MAG STANDARD DETAIL NO. 230).
4. INSTALL CHAIN LINK FENCE AND GATE (MAG STANDARD DETAIL NO. 160, FENCE HEIGHT AND GATE WIDTH TO BE MODIFIED PER PLANS).
5. INSTALL SIDEWALK RAMP (SEE DETAIL ON SHEET C-2).
6. SAWCUT, REMOVE AND REPLACE 2' MINIMUM OF EXISTING A.C. PAVEMENT IN KIND.
7. INSTALL A.C. PAVEMENT (3" A.C. (3/4 INCH) OVER 6" A.B.C. OVER 10" COMPACTED SUBGRADE).
8. INSTALL DRAIN THROUGH LANDSCAPED AREA (SEE DETAIL ON SHEET C-2).

9. PAINT STRIPE PARKING LOTS TO THE ALIGNMENTS INDICATED, INCLUDING ALL DIRECTIONAL ARROWS, HANDICAP SYMBOLS, CROSSWALKS, ETC.).
10. INSTALL 6" THICK 4000 P.S.I CONCRETE OVER 4" A.B.C., OVER 10" COMPACTED SUBGRADE.
11. INSTALL CONCRETE DRIVEWAY ENTRANCE (CITY OF SCOTTSDALE STANDARD DETAIL NO. 2250).
12. CONSTRUCT WIDE CONCRETE SCUPPER (MAG STANDARD DETAIL NO. 206-1, -2, AND -3, WITH SPLASHPAD, SCUPPER WIDTH TO BE 7").
13. MATCH EXISTING CONCRETE SIDEWALK AND/OR CONCRETE CURB LOCATION AND ELEVATION.
14. INSTALL DRIVEWAY ENTRANCE (MAG STANDARD DETAIL NO. 250-2, MODIFIED PER PLAN).
15. FIELD VERIFY LOCATION AND ELEVATION OF EXISTING GAS OR WATER LINES PRIOR TO THE START OF CONSTRUCTION. PROTECT FROM DAMAGE.
16. NEW BASKETBALL POSTS AND STRIPING (SEE SHEET C-3 FOR DETAILS).
17. INSTALL CONCRETE SIDEWALK TURNDOWN (SEE DETAIL ON SHEET C-2).

18. INSTALL PLAY AREA WALL (SEE LANDSCAPE PLANS).
19. GRADE FROM 1" BELOW TOP OF SIDEWALK TO MATCH EXISTING GRADE AT A 6:1 MAX. SLOPE.
20. ADJUST DRYWELL RIM TO GRADE INDICATED (MAG STANDARD DETAIL NO. 422).
21. REMOVE, SALVAGE AND REINSTALL EXISTING SIGN WITH NEW POST AND BASE PER MAG STANDARD DETAIL NO. 131, TYPE 'C'.
22. INSTALL SITE WALL (SEE STRUCTURAL PLANS).
23. INSTALL NEW FOUR SQUARE (SEE SHEET C-2).
24. CONNECT TO EXISTING BUILDING DOWNSPOUT WITH A NEW SQUARE TO ROUND ADAPTER.
25. INSTALL NEW 8" H.D.P.E. STORM DRAIN PIPE WITH SMOOTH INTERIOR AND 10.8 P.S.I. JOINTS.
26. INSTALL AREA DRAIN (SEE DETAIL ON SHEET C-2).
27. INSTALL DUAL CHAMBER DRYWELL (SEE DETAIL ON SHEET C-2).
28. INSTALL PASTURE VALVE (SEE DETAIL ON SHEET C-2).
29. ADJUST EXISTING WATER VALVE TO FINISH GRADE (MAG STANDARD DETAIL NO. 270).

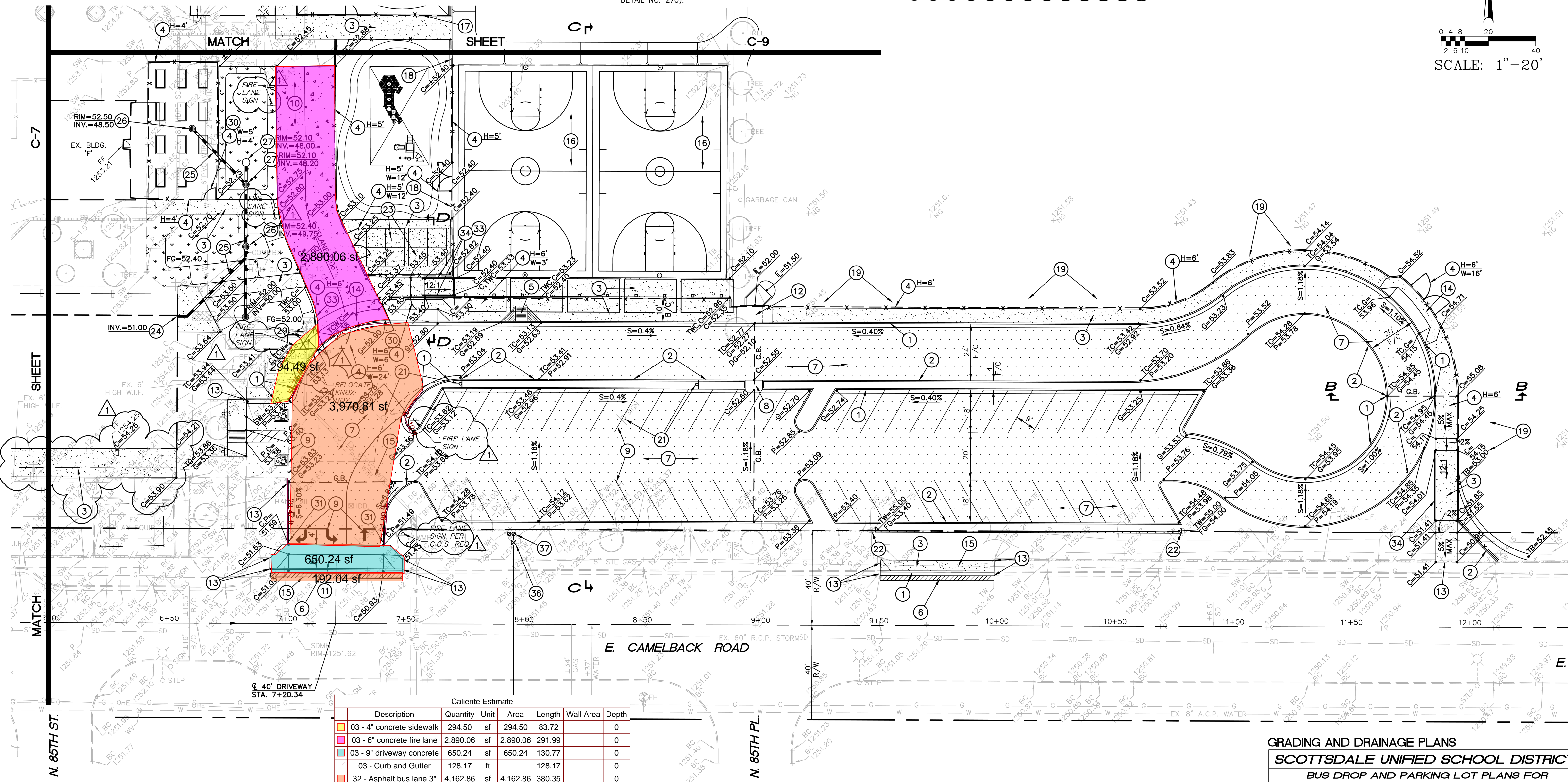
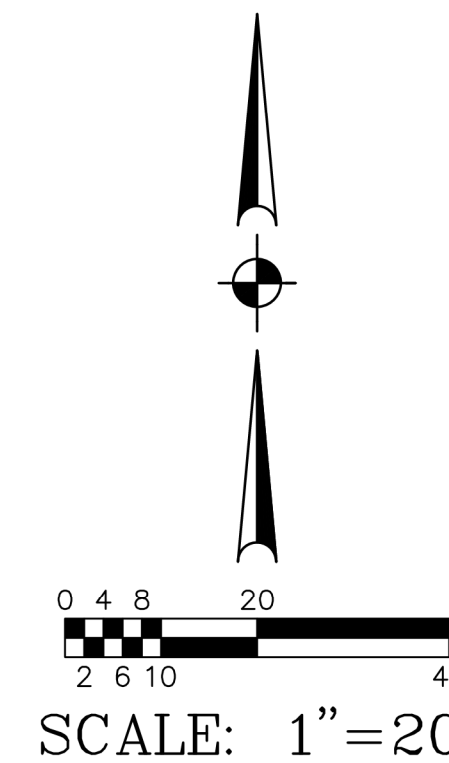
30. INSTALL DEADBOLT LOCK TO CHAIN LINK FENCE (SEE LANDSCAPE DRAWINGS).
31. CURB TERMINATION (MAG STANDARD DETAIL NO. 222). MODIFIED FOR VERTICAL CURB AND GUTTER WHERE SHOWN.
32. INSTALL WROUGHT IRON FENCE/GATE (SEE DETAIL ON SHEET C-2).
33. CONSTRUCT CURB WALL (SEE DETAIL ON SHEET C-2).
34. INSTALL HANDRAIL (SEE DETAIL ON SHEET C-2).
35. REMOVE AND RELOCATE BACKSTOP.
36. NEW 1.5" WATER METER TO BE INSTALLED BY CITY AFTER ALL APPROPRIATE FEES HAVE BEEN PAID.
37. INSTALL 1.5" REDUCED PRESSURE PRINCIPLE BACKFLOW PREVENTION ASSEMBLY. INSTALL GUARDSHACK HS-2 ENCLOSURE OR APPROVED EQUAL ON 4" CONCRETE SLAB.

NOTE: ALL FIRE LANE SIGNS PER C.O.S. STANDARD DETAIL NO. 2365 WITH POST PER MAG STANDARD DETAIL NO. 131.



HESS - ROUNTREE, INC.
CONSULTING ENGINEERS & LAND SURVEYORS
9831 SOUTH 51ST STREET, SUITE C110
PHOENIX, ARIZONA 85044 (480)496-0244

DES. **MAM** DRN. **ANM** CKD **DRO** JOB NO. **1904-10**



Caliente Estimate						
Description	Quantity	Unit	Area	Length	Wall Area	Depth
03 - 4" concrete sidewalk	294.50	sf	294.50	83.72		0
03 - 6" concrete fire lane	2,890.06	sf	2,890.06	291.99		0
03 - 9" driveway concrete	650.24	sf	650.24	130.77		0
03 - Curb and Gutter	128.17	ft		128.17		0
32 - Asphalt bus lane 3"	4,162.86	sf	4,162.86	380.35		0

ADDENDUM 1: 2/24/20



GRADING AND DRAINAGE PLANS			
SCOTTSDALE UNIFIED SCHOOL DISTRICT			
BUS DROP AND PARKING LOT PLANS FOR NAVAJO ELEMENTARY SCHOOL			
DRAWING STATUS	SHEET	OF	
ADDENDUM 1			
DATE: 02-24-20	8	9	C-8

COS #5566-19